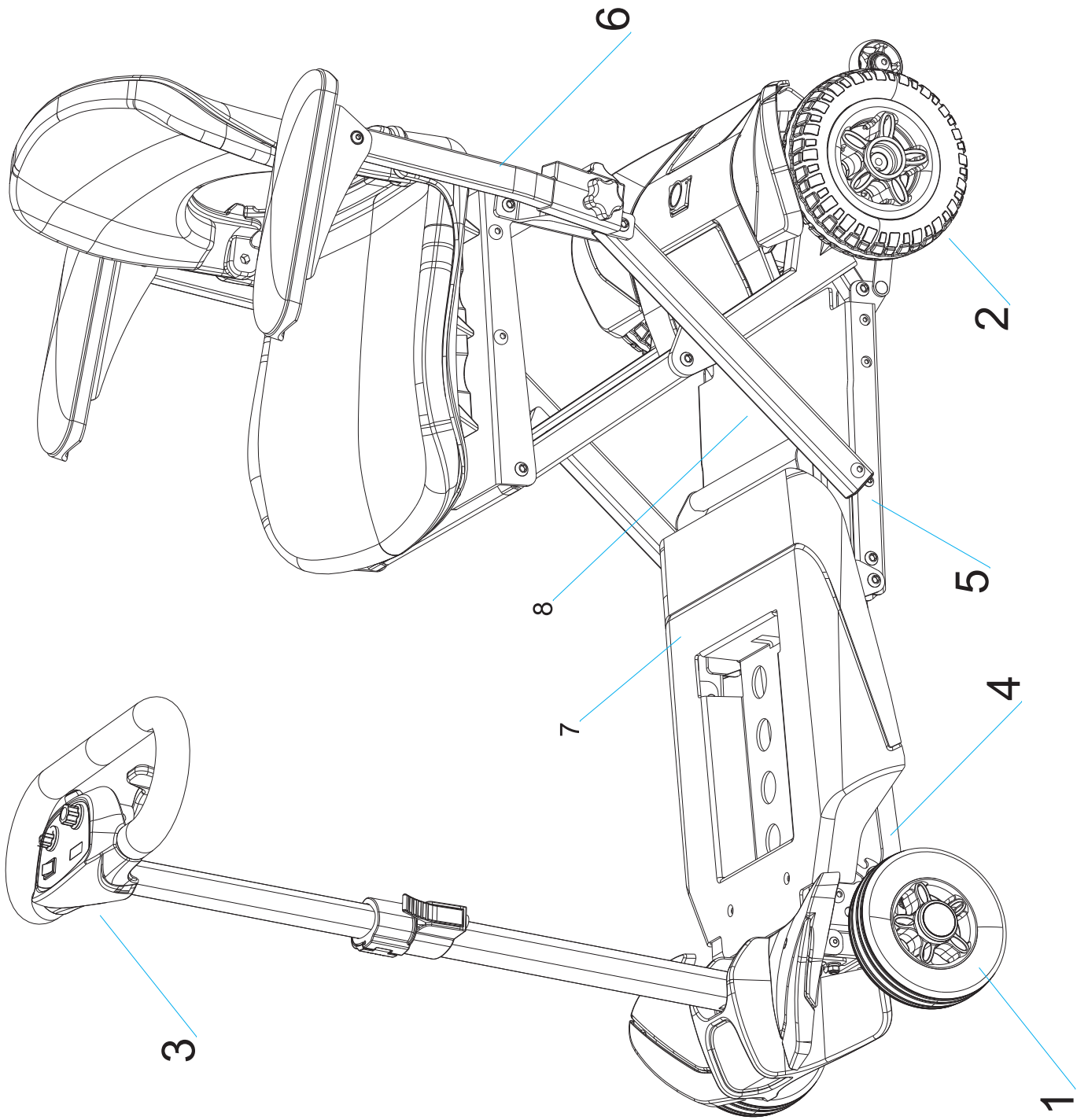


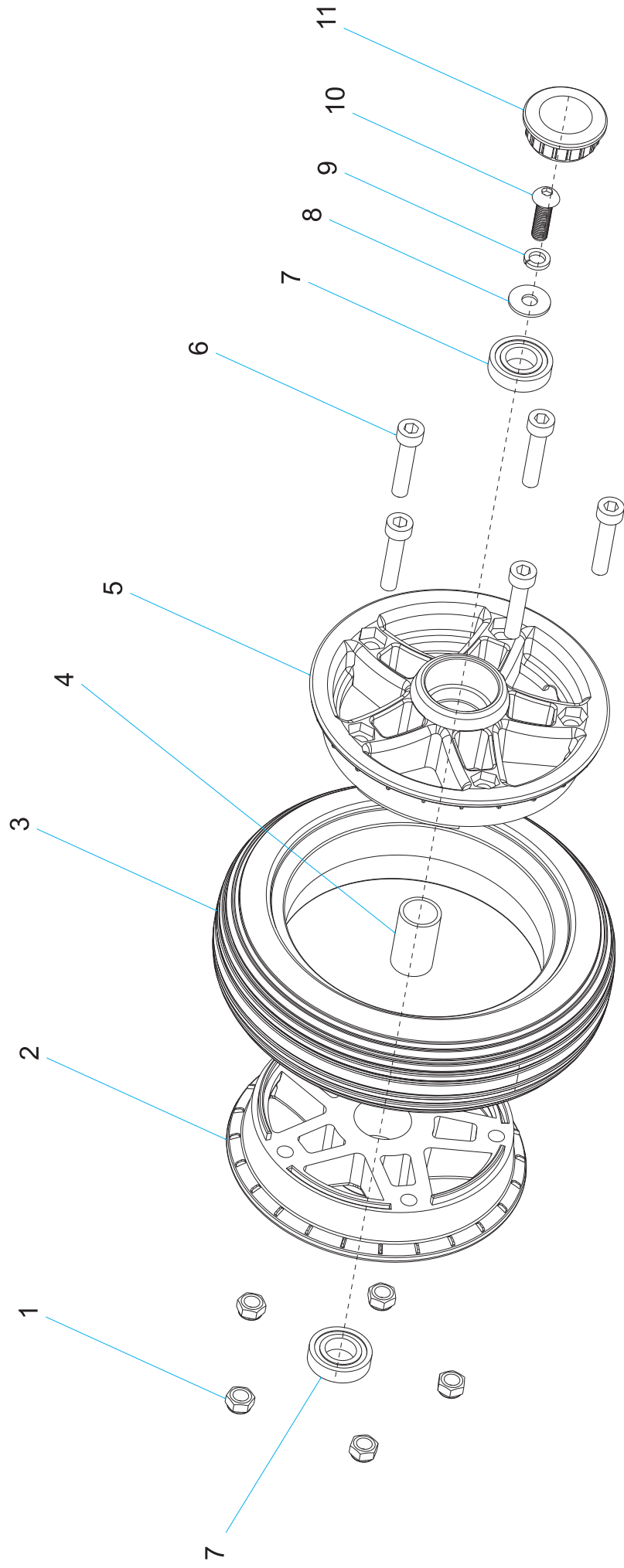
Contents

I、 Wheel System (Front)	1-2
II、 Wheel System(Rear).....	3-4
III、 Control Box System	5-6
IV、 Frame System(Front).....	7-8
V、 Frame System (Rear)	9-13
VI、 Armrest-Left/Armrest-Right.....	14-15
VII、 Foot Panel housing.....	16-17
VIII、 Folding Mechanism.....	18-19
IX、 Dirving System (Motor, Transaxle and Brake).....	20-21
X、 PG Controller Error Code.....	22
XI、 Dynamic Controller Error Code.....	23
XII、 Electronic Diagram.....	24



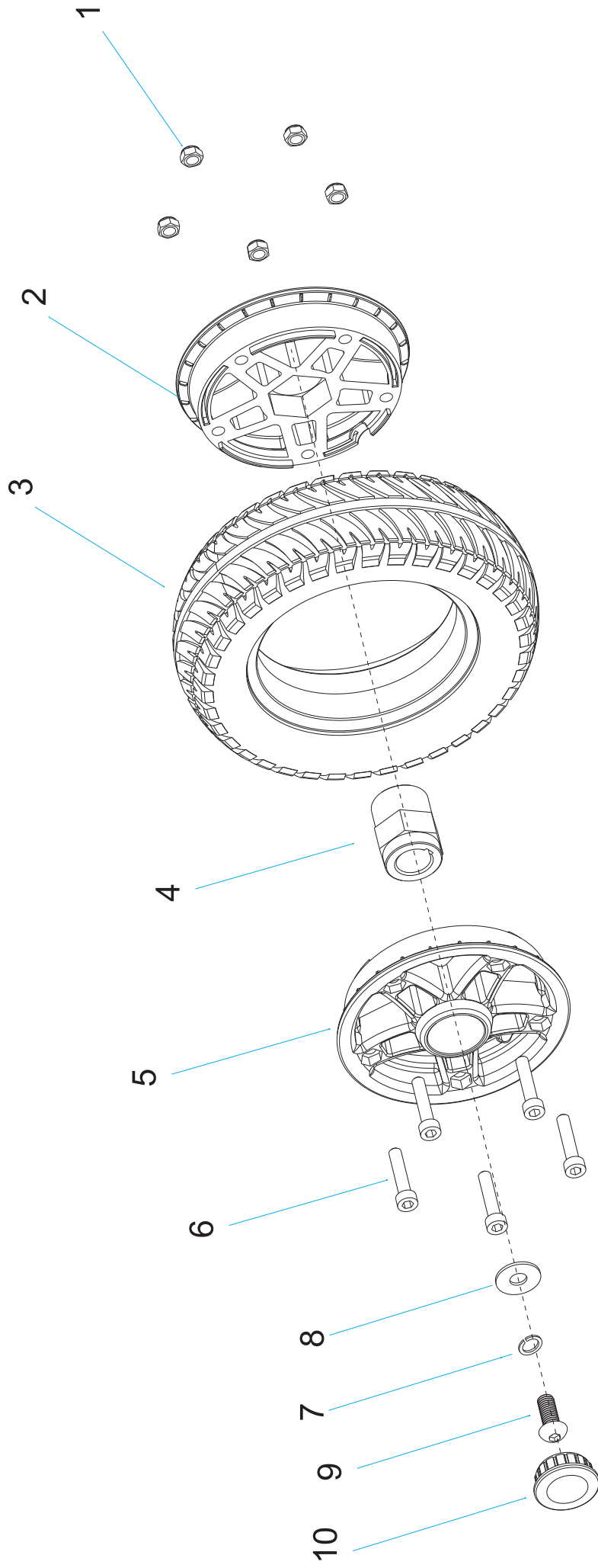
serial no.	reference no.	name	quantity	remark
1	902061003000R	Wheel System (Front)	2	
2	902061002000R	Wheel System (Rear)	2	only use to S3021 and S2061
	910030210004R		1	
3	910030210005R	Control Box System	1	
4	920030210220R	Frame system (Front)	1	
5	920030210220R	Frame system (Rear)	1	
6	910020300200R	Armrest-Left/	1	
	910020300300R	Armrest-Right	1	
7	930030210390R	Foot Panel housing	1	
8	9910302100700R	Folding Mechanism	1	

Front Wheel



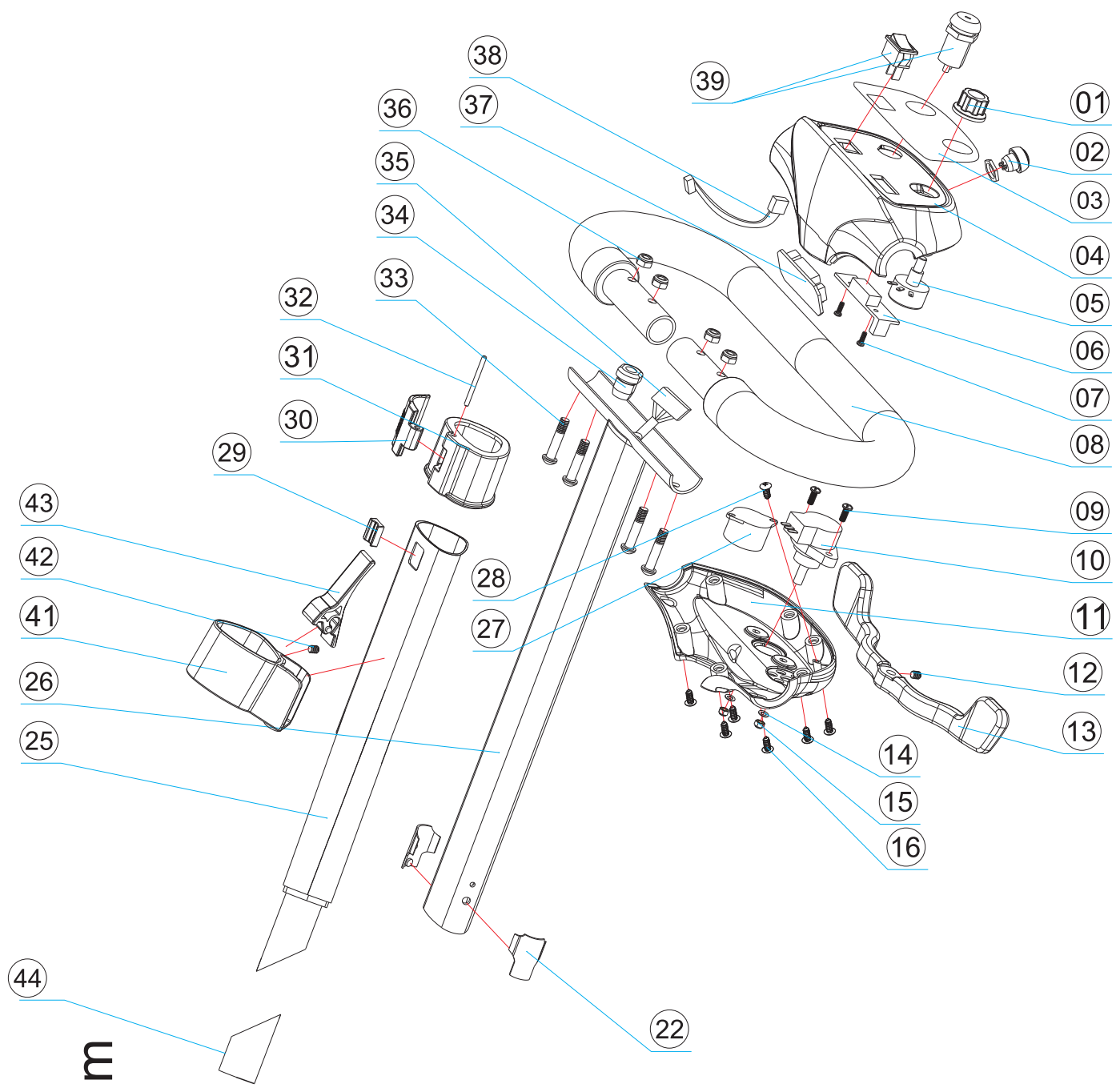
serial no.	reference no.	name	quantity	remark
1	200E032A0001R	M6 nylon nut	5	M6
2	308114330004R	front hub-inner	1	
3	308152420020R	front wheel tyre	1	
4	213131626572R	bearing of front wheel	1	∅ 13* ∅ 16*26.5
5	308114330002R	front hub	1	
6	200063020300R	hexagon socket head cap screws	5	M6*30
7	350241290000R	bearing-front wheel	1	6901
8	20100M632H20R	6 flat gasket	1	M6/D16*d6.4*T1.2
9	20100M632H00R	6 spring gasket	1	
10	200E28EAM620R	M6*20 Resistance to fall scre	1	
11	308321290000R	wheel hub cover	1	

Rear Wheel



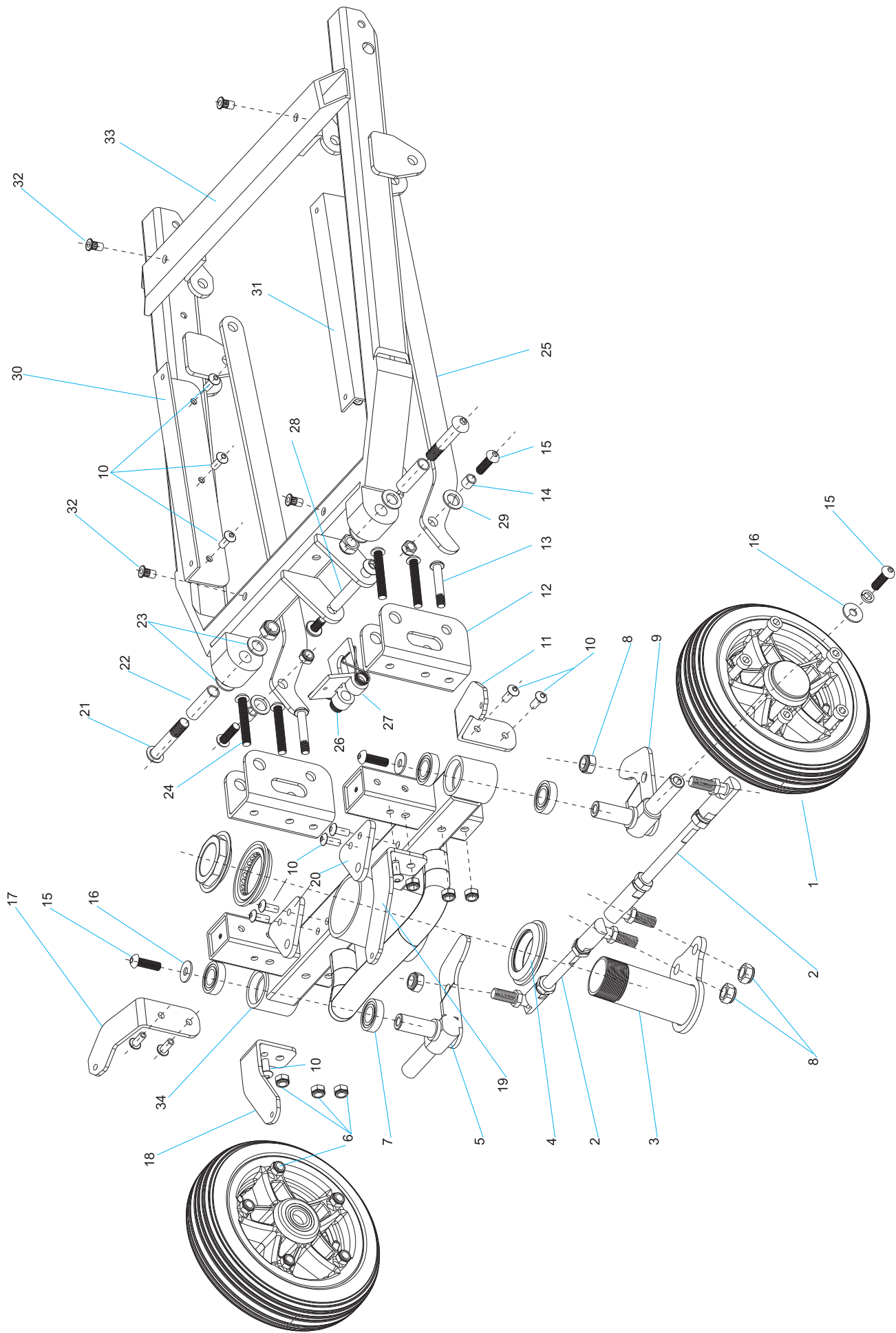
serial no.	reference no.	name	quantity	remark
1	200E032A0001R	M6 nylon nut	5	M6
2	308114330000R	rear hub	1	
3	308178600020R	rear wheel tyre	1	
4	219333850200R	Hexagonal aluminum 2061/2091	1	
5	308114330003R	front hub	1	
6	200063020300R	Hex cylinder head screw	5	M6*30
7	20100M832200R	spring shim	1	
8	201842414H10R	flat gasket(rear wheel)	1	D22*d8.5*1.5
9	200B10068508R	Round head hex socket resistance screws	1	
10	308321290000R	wheel hub cover	1	

Control Box System



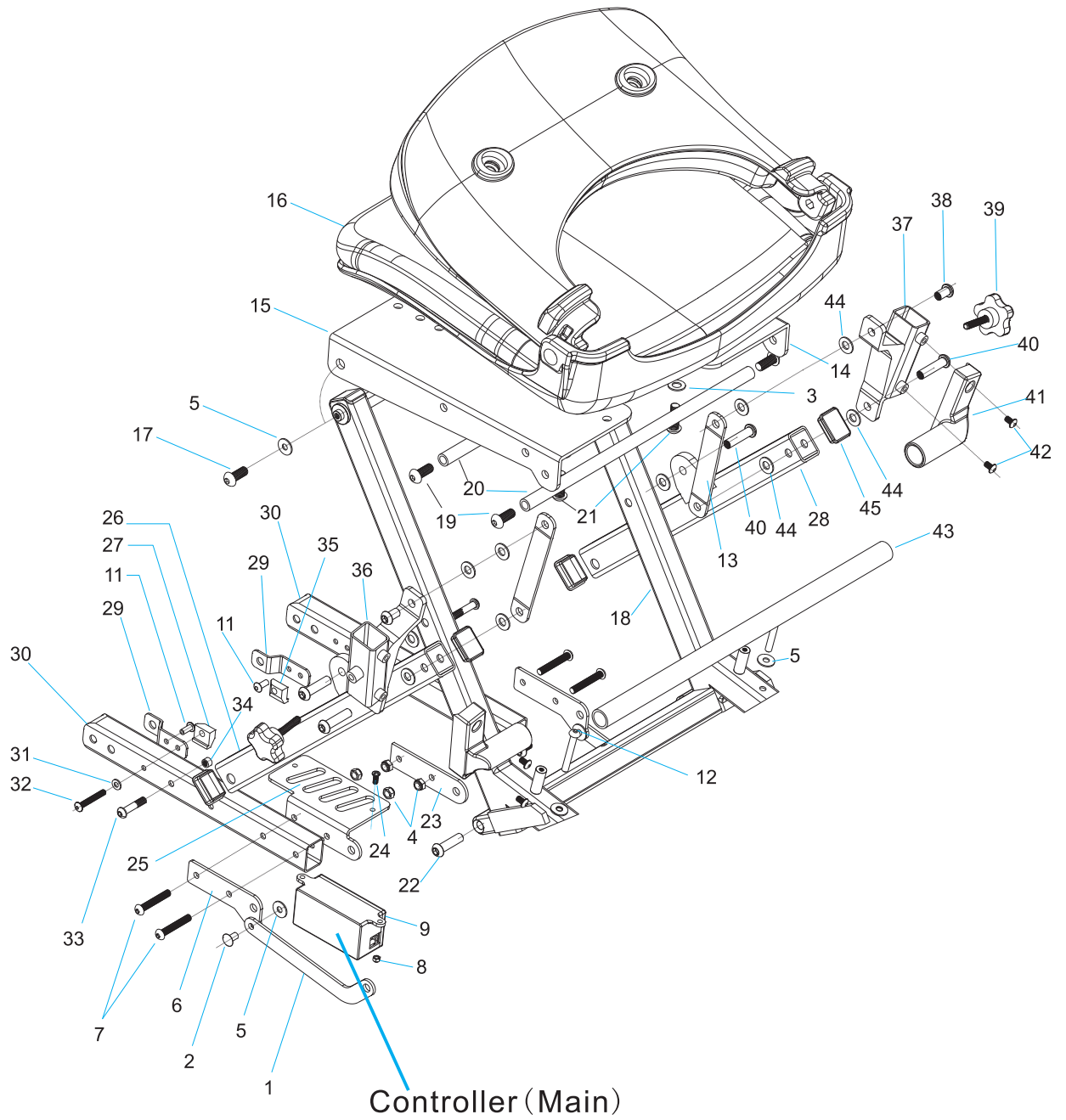
serial no.	reference no.	name	quantity	remark
1	198208100220R	Speed control switch	1	
2	198208100250R	Horn switch cover - yellow	1	
3	506108573000R	plate (Rocker Switch)	1	
4	308160104825R	Upper control panel	1	
5	198208100200R	Speed control switch component	1	
6	9100102510E0R	Battery indicator	1	
7	200E32A12960R	half - cross round self - driving screw	1	ST2 . 9 * 6
8	309349730150R	Handle tube with foaming	1	
9	200E19ECM415R	half - cross round screw	2	M4 * 15
10	197208120140R	S2081 Potentiometer components	1	
11	308160974530R	Bottom control panel	1	
12	220040620810R	hexagon socket set screw with flat point	1	M4x6
13	209002081000R	control level	1	
14	201M40002102R	plate gasket	2	M4
15	238C04112041R	nylon nut	2	M4
16	200519C60130R	ST4 .2 self - driving scrw	6	ST4 . 2 * 11
22	321702323A10R	G4 stopper (M1234)	2	
25	236477150100R	tiller B	1	
26	236411150100R	tiller A	1	
27	198208100260R	Beeper component in control panel	1	
28	200221020810R	cross pan head tapping screw	1	ST3 . 2x8
29	208156125300R	Small locking block	1	
30	208513900300R	switch of conector	1	
31	208513900200R	connector in tiller	1	
32	299033572000R	round pin	1	
33	302016300371R	hex socket flat head half thread screw	4	M6x30
34	3984000900140	strain relief bushings	1	
35	198513801001R	Master cable	1	
36	238060020020R	nylon nut	4	M6
37	105602451694R	transfer board	1	
38	198208100270R	battery indicator wire	1	
39	198208100230R	lock switch set	1	use for domestic trade
	1AC212525100R	roker switch set	1	used for internation trade
41	339638545370R	Lasso fixing sleeve	1	
42	200E12EC3910R	headless hexagon socket screw A	1	M4 * 8
43	365772643414R	release switch	1	
44	20825750000BR	bevel fastener	1	30 degree bevel the posterior mass production

Frame system(Front)



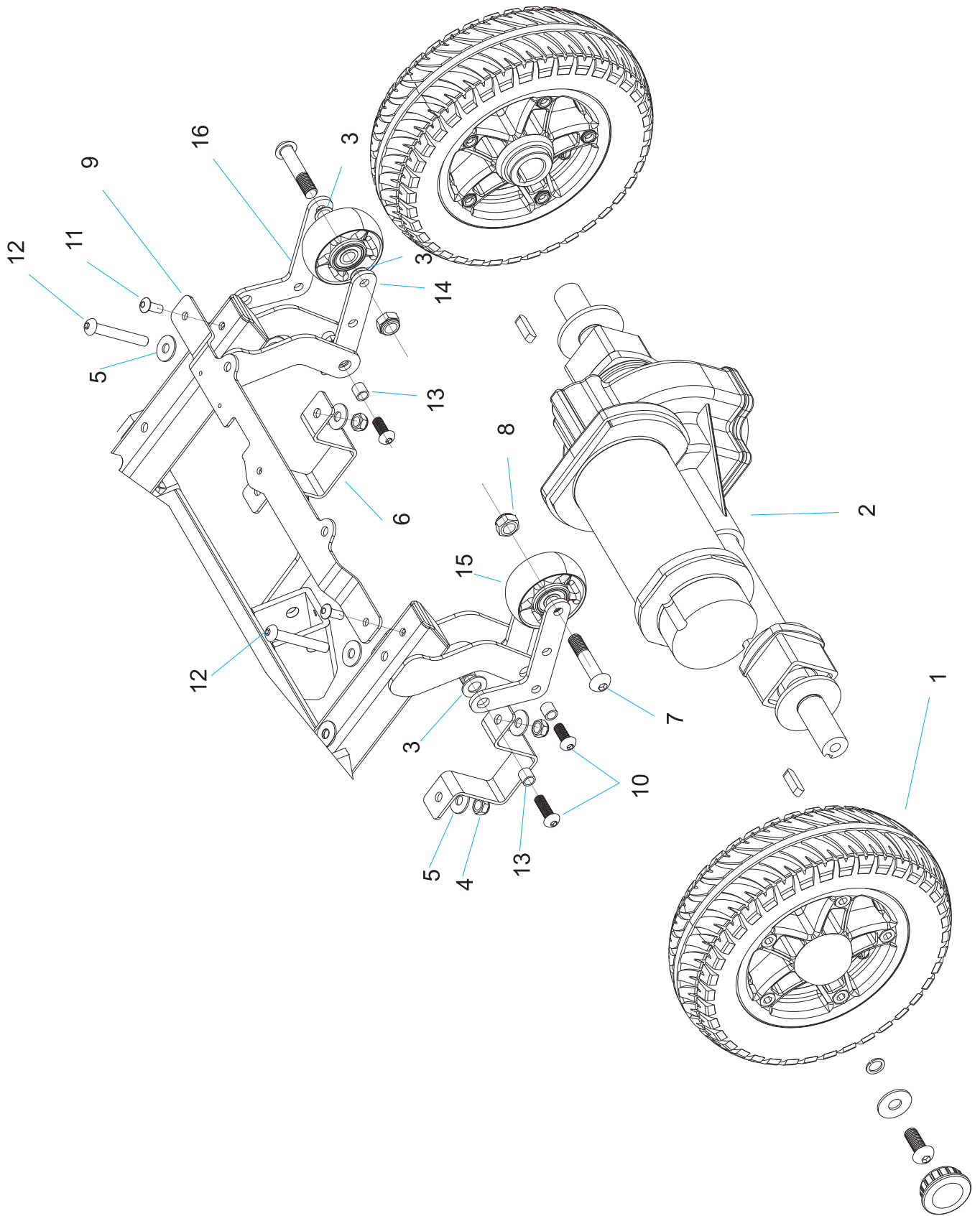
serial no.	reference no.	name	quantity	remark
1	902061003000R	Wheel System(Rear)	2	with bearing,sleeve,wheel hub cap
2	912061003002R	Steering ball- connecting rod component	2	
3	272002091000R	steering connector	1	Welded structure (balck)
4	208070820810R	bowl shape bearing	1	
5	208002030030R	Steering shaft-left	1	Welded structure (balck)
6	200E032A0001R	M6 Nylon nut	18	one wheel use 5 pcs
7	350241290000R	bearings -front wheel	8	one wheel use 2 pcs
8	238C08112041R	M8 Nylon nut	6	
9	208002030000R	steering shaft-right	1	Welded structure (balck)
10	220B00NC5L10R	pop-rivet	16	steel Φ 5*L10mm
11	2086220910BR	front cover holder B-left	1	
12	208209110A0R	front Spinner Rack -A	2	
13	302010400371	inner hex, half round head thread, boltC	2	M6*35
14	236867716H00R	8 sleeving -1.7.7	2	\emptyset 8* \emptyset 6*L7.7
15	200E28EAM620R	M6*20 Resistance to fall screw	6	M6*20screws
16	29900M632H00R	\emptyset 6 falt gasket	4	
17	2086220913BR	front cover holder B-right	1	
18	2088020913AR	front cover holder A-right	1	
19	2088020912AR	front cover holder A-left	1	
20	221368728000R	rear cover fixed plate	2	
21	200E12CA88450	Round head hex half tooth screw	2	M8* \emptyset 8*L45/length20mm
22	236100832720R	10 sleeving -L32	2	Q235/ Φ 10* Φ 8*L32
23	329201043N00RV1	10 nylon gasket	4	\emptyset 20* \emptyset 10.5*T0.5
24	200E032C0000R	Round head hex half tooth screw	4	M6*40mm
25	208387734700R	bottom pull rod	2	
26	208210080900R	Lock loose bilateral torsion spring	1	
27	203002030220R	lock catch realease switch	1	
28	238080653000R	lock nut with screw L55	1	
29	299204132H00R	8 plate gasket	2	
29	224203825181R	footboard holder plate -right	1	
31	224203825180R	footboard holder plate -left	1	
32	238042091000R	M4 blind nut	4	
33	236302100300R	footboard tube gruop	1	Welded structure
34	287002091000R	front frame	1	Welded structure

Frame System(Rear)



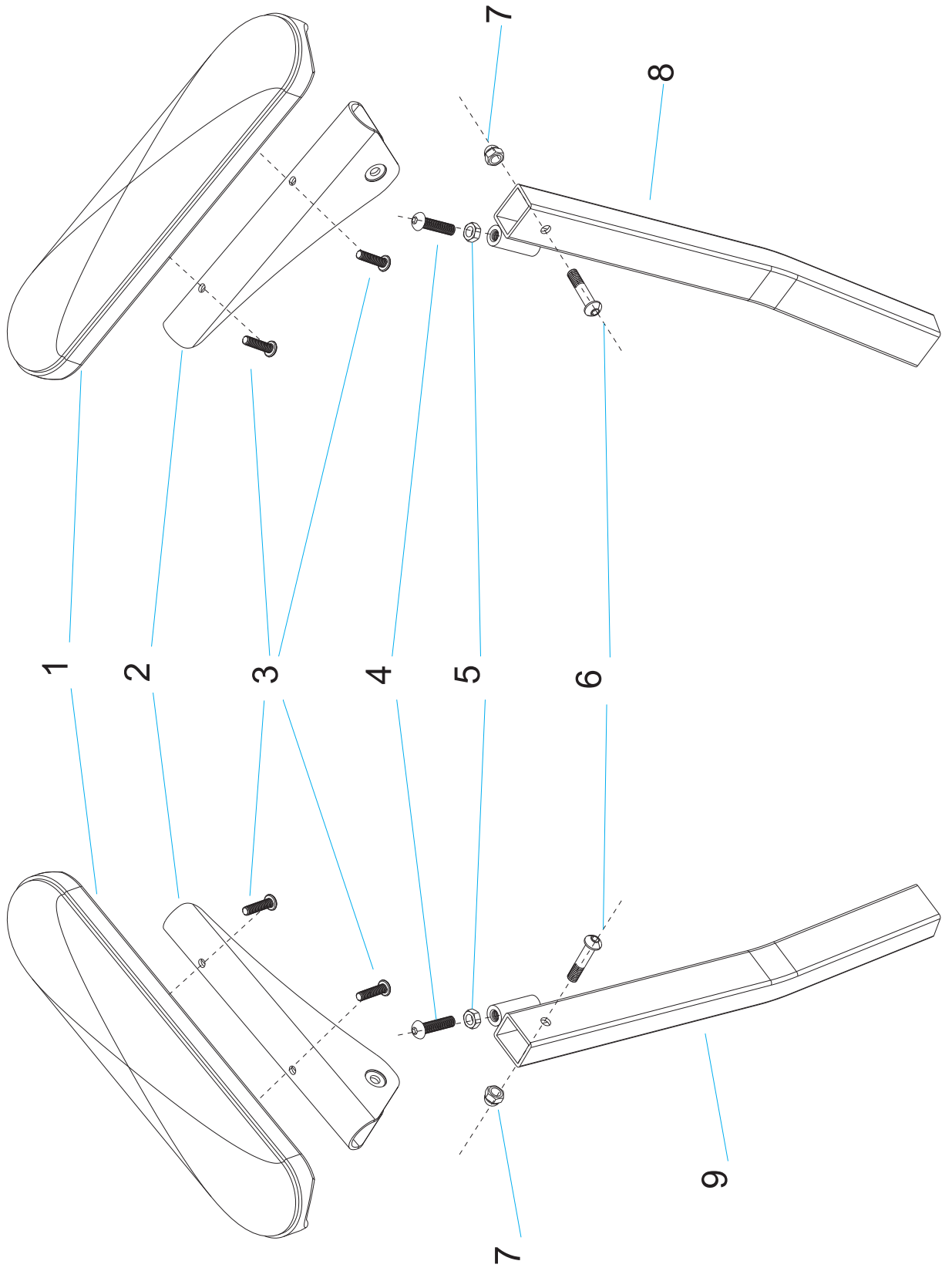
serial no.	reference no.	name	quantity	remark
1	208154400300R	G6 anti-tip bar	2	
2	2086100051000	6 Rivet	1	Ø6*L10*5
3	299204132H00R	8 flat plate	6	
4	200E032A0001R	m6 nylon nut	10	
5	29900M632H00R	6 plate gasket	6	D16*d6.4
6	20890380300DR	Rotating Joint D	2	
7	200E032C0000R	M6 Round Head Hex Socket Screws	4	M6*40
8	238C04112041R	M4 nylon nut	2	
9	236001002018R	Remote Control receiver Push Rod Motor Relay	1	
10	200E28EAM615R	screws M6*15	2	
11	220B00NC5L10R	rivet	2	steel/Φ5*L10mm
12	200E28EA0645R	M6*45 Round head hex socket screws	2	the lock motor, brake and transaxle
13	208125820000R	Seat bracket of iron	2	
14	224110402830R	Seat bottom - right	1	
15	224110402800R	Seat bottom - left	1	
16	367453802050R	seat	1	
17	200E28EAM620R	M6*20resistance to fall screws	2	
18	208003021010R	Seat bracket welded components	1	
19	200B10068508R	Round head hex socket resistance screws	4	M8*20
20	236123130820R	Strengthen circular tube at the bottom of the seat	2	
21	200E28EC8251R	M8*25screws	4	
22	238080630000R	the lock nut(with scews) L13	2	
23	20892240000CR	rotating joint C	1	
24	200041072000R	m4*10 screws	2	
25	230100200100R	rotating joint E	1	
26	23600209103AR	The seat supporting tube A -left	1	
27	219101711800R	Fixed aluminum - left	1	

serial no.	reference no.	name	quantity	remark
28	23600209106AR	The seat supporting tube A - right	1	
29	224203825181R	Rod reinforcing plate	2	
30	236302427200R	rear the pedal tube	2	
31	201580005E000	5 flat plate	2	
32	220053520020R	Cross pan head screw	2	m5*35
33	302016300371R	Allen flat round head and a half threaded screw C	2	m6*30
34	238080605000R	cylinder M6nut	2	Φ 8*M6*L5
35	219101711830R	Fixed aluminum - right	1	
36	208606106050R	Seat the aluminum group - left	1	
37	208606106054R	Seat the aluminum group - right	1	
38	238080613000R	the lock nut(with scews) L13	2	
39	200063000200R	The handle screws -M6*30	2	
40	238080633000R	the lock nut (with screws) L33	4	
41	308807132020R	L fixed - right	1	
42	200050800000R	M5Round head hex socket screws	2	
43	208192039700R	L fixed tube	1	
44	201168245000R	8 nylon flat	10	Ø16*Ø8.2*T0.5
45	33126202000AR	pipe A	4	



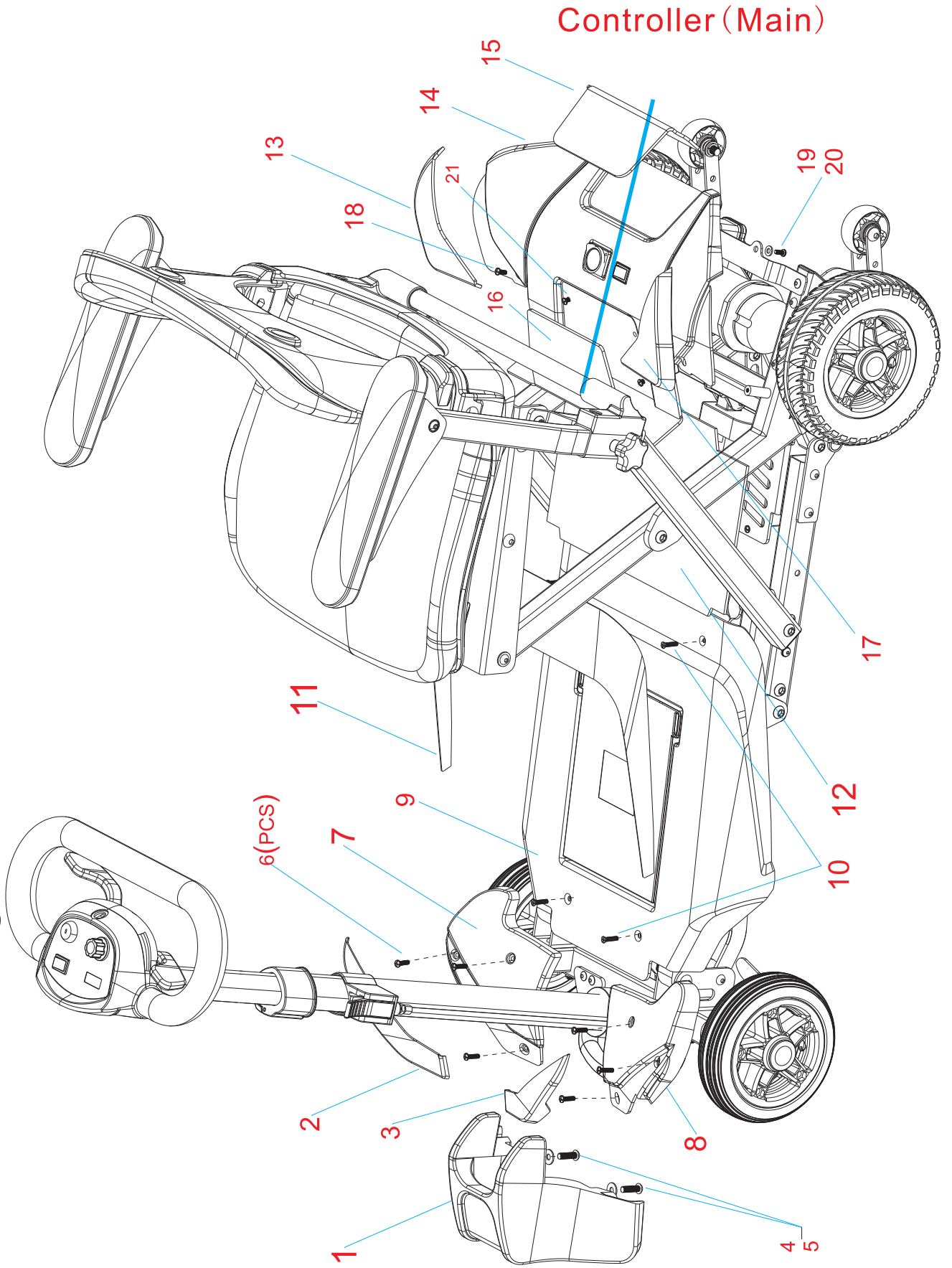
serial no.	reference no.	name	quantity	remark
1	902061002000R	Wheel System(Rear)	2	
2	925120204130R	Motor, Brake, Transaxle Assembly	1	
3	299204132H00R	8 flat plate	4	
4	200E032A0001R	m6 nylon nut	4	
5	29900M632H00R	6 plate gasket	4	D16*d6.4
6	211873852025R	motor supporting structure	2	
7	200E12CA88450	Round Head Hex Half Tooth Screw	2	M8* $\underline{\varnothing}$
8	238C08112041R	M8 nylon nut		
9	211123053710R	Front-shell Holder B-Right	1	
10	200E28EAM615R	screws M6*15	4	
11	220B00NC5L10R	rivet	2	steel/ Φ 5*L10mm
12	200E28EA0645R	M6*45 Round head hex socket screws	2	the lock motor,brake and transaxle
13	236867716H00R	8 Pipe Casing-L7.7	6	\varnothing 8* \varnothing 6*L7.7
14	224855850060R	G6 The Sway Wheel Fixed Plate 2-Right	1	right and left
15	208002091000R	G6 anti-tip wheel	2	2"
16	224855850010R	G6 The Sway Wheel Fixed Plate 2-Right	1	right and left

Armrest-Left/Armrest-Right



serial no.	reference no.	name	quantity	remark
1	234452514200R	armrest Plate rent	2	
2	224174116N10R	armrests mounting plate	2	
3	200B19461580R	M5 The cup head screws	4	M5*12
4	200E28EAM620R	M6*20 screws	2	M6*20
5	238006046528R	M6 hexagon nut	2	
6	302016300371R	Allen plain thread screw	2	M6*30
7	238706046080R	M6 acorn nut	2	
8	236303380000R	handrail Welding rent-right	1	
9	236303380400R	handrail Welding rent-left	1	

Foot Panel housing



serial number	reference no.	name	quantity	remark
1	391125132526R	front housing foam	1	
2	alternative color	front housing B right	1	
3	alternative color	front housing B left	1	
4	29900M632H00R	6 flat plate	2	
5	200E28EAM620R	M6*20Resistance to fall screws	2	
6	200E19ECM415R	M4*15 screws	6	4pcs M4 nylon nut
7	391156114935R	front housng A right	1	
8	391156114933R	front housing A left	1	
9	33034827320BR	front pedal B	1	put the battery
10	302010100140	The countersunk head screws	4	M4*14.5
11	alternative color	front pedal A	1	
12	308377175030R	rear the pedal elas- tic cloth	1	
13	alternative color	G6 rear housing C	1	
14	391226404743R	rear housing A	1	
15	alternative color	rear housing D	1	
16	391246791493R	rear housing E	1	
17	alternative color	rear housing B	1	
18	200B04088000R	M4*8screws	2	
19	201M40002102R	4flat plate	2	
20	200041072000R	M4*10screw	2	
21	200042872000R	M4*28 The countersunk head screws	2	using for lock the controller

Folding Mechanism

The description of installing electric push rod:

attention:the push rod of the must be assembled in the process of half-lap.

And when assembled,the push rod must have upward slope angle.

1)assemble the bottom of the push rod first.(picture 2)

2)assemble of upper of the push rod second and pay attention to the angle of the rod.(picture 1)

3)when the assembling is done,use remote controller to adjust and it will have two different situations.

a.It doesn't fold completely,because the pothook in the bottom of the rod doesn't hook on.

The screw of M8*45 should be disassembled (picture2),and then pull the plug.

Screw out the rod in a round two rounds or three rounds(the size of extension rod)

We assemble M8*45 screw and install wire terminal,and then adjust the scooter until it can be completely folded.

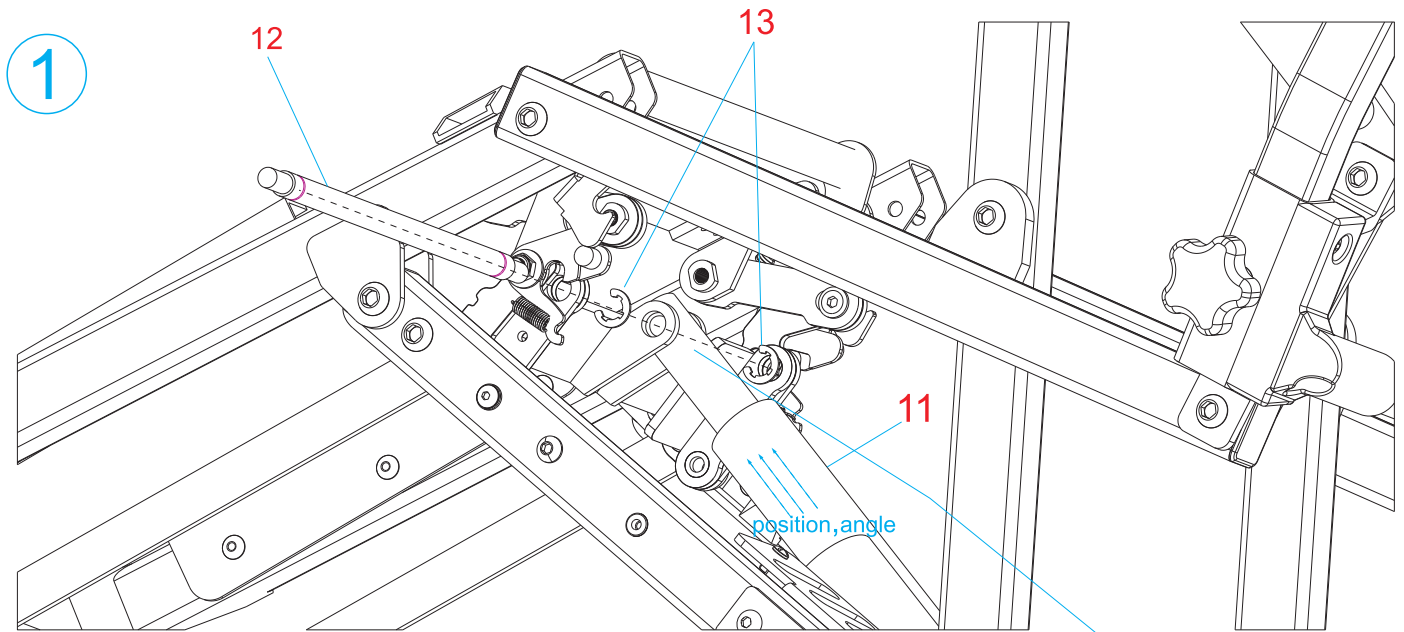
b.When it's opened,it doesn't entirely unfold,because the pothook in the pedal parts doesn't hook on.

manually fold the scooter to (picture 1)condition.

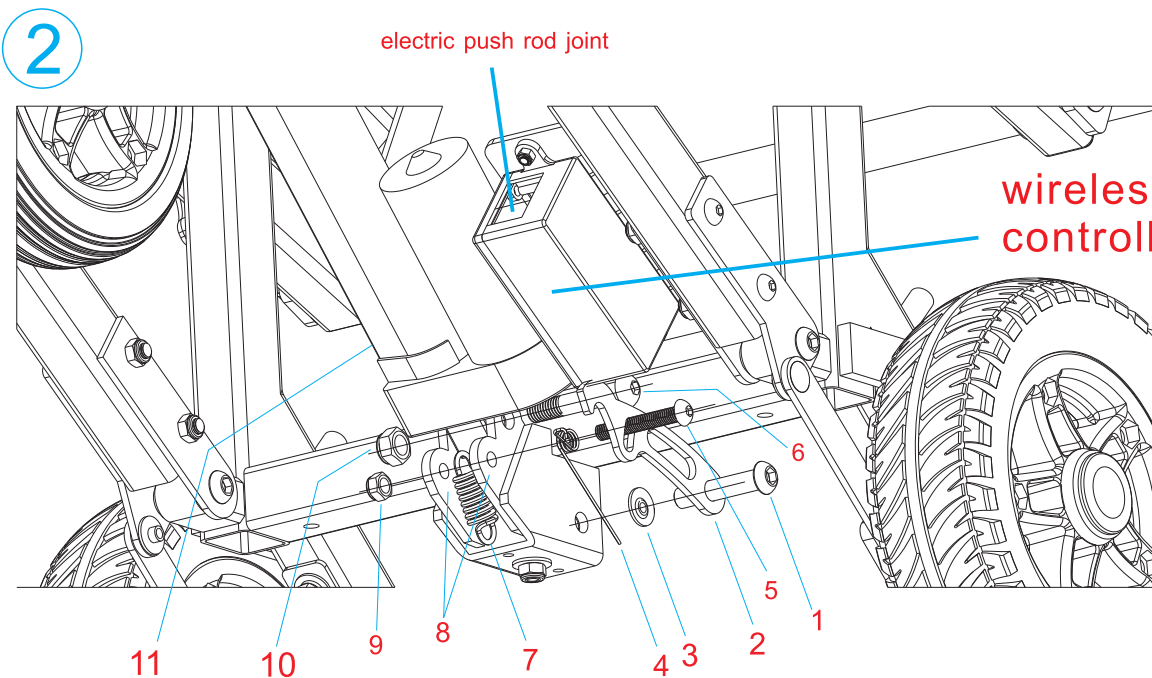
M8*45 screw should be disassembled and wire terminal should be pulled up.(picture 2)

The rod should be screwed in 1-3 round.(the size of shortening rod)

We assemble 8*45 screw and install wire terminal ,and then adjust the scooter until completely stretch.



please pay more attention when the installation position, the push rod should as same as the picture shown



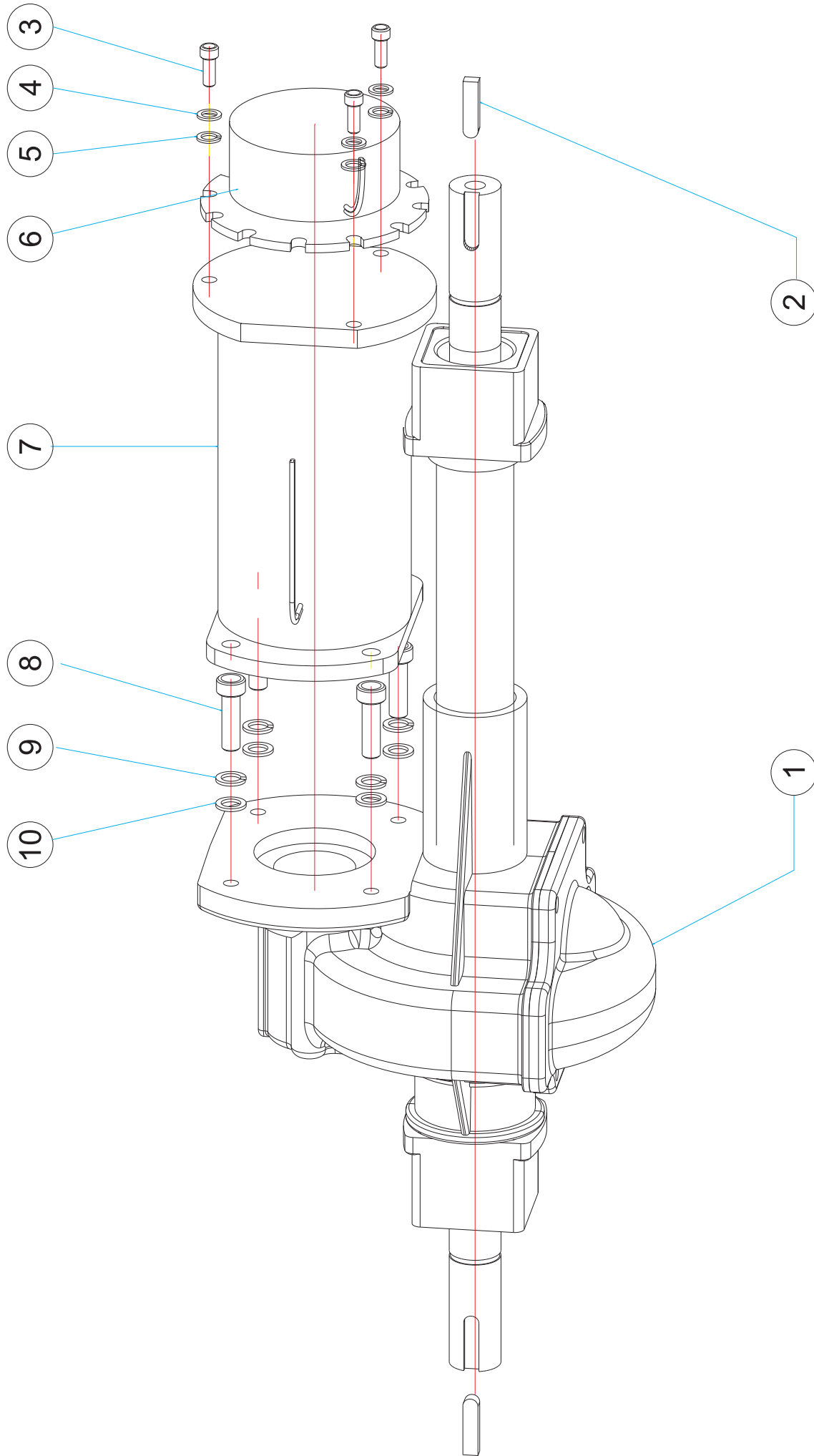
wireless controller



Controller (Remote Controller)

serial no.	reference no.	name	quantity	remark
1	238080640000R	the lock screw(with nut)L40	1	
2	208928724260R	Automatic manual hooks	1	
3	201168245000R	8 nylon flat	1	
4	208210080800R	Lock loose torsional spring	1	
5	200E28EA0645R	M6*45Round head hex socket screws	1	
6	200E12CA88450	M8*45Hex half tooth screw	1	
7	202122980020R	At the bottom of the push rod tension spring	1	
8	208691252050R	electric push rod movable support	2	
9	200E032A0001R	M6 nylon nut	1	
10	238C08112041R	M8 nylon nut	1	
11	136212515000R	Folding mechanism	1	
12	208102468160R	folding push rod	1	
13	202081608002R	Type B circlip	2	

Driving System (Motor, Transaxle and Brake)



serial no.	name	quantity	remark
①	Transaxle Assembly	1	
②	flat key	2	
③	bolt	3	M4*10mm
④	flat gasket	3	D8*d4*T1mm
⑤	spring shim	3	
⑥	brake	1	
⑦	motor	1	
⑧	bolt	4	M6*16mm
⑨	flat gasket	4	
⑩	spring shim	4	D10*d6*T1mm

Dynamic Controller Error Code



5.2.3 Type 3Flash Codes

Flash	Description
1	Low Battery
2	Bad Motor Connection
3	Motor Short Circuit
4	Current Limit Time-out / Controller too hot
5	unused
6	Drive Inhibit
7	Throttle Fault
8	Controller Fault
9	Park Brake Fault
10	High Battery Voltage

PG Controller Error Code



Trouble Shooting -

1 Bar ■	The battery needs charging or there is a bad connection to the battery. Check the connections to the battery. If the connections are good, try charging the battery.
2 Bar ■■	There is a bad connection to the motor. Check all connections between the motor and the controller.
3 Bar ■■■	The motor has a short circuit to a battery connection. Contact your service agent.
4 Bar ■■■■	The freewheel switch is activated or the manual brake disengagement mechanism is operated. Check the position of the switch or lever.
5 Bar ■■■■■	Not used.
6 Bar ■■■■■■	The S-drive is being inhibited from driving. Inhibit 2 is active. This may be because the battery charger is connected or the seat is not in the driving position.
7 Bar ■■■■■■■	A throttle fault is indicated. Make sure that the throttle is in the rest position before switching on the scooter.
8 Bar ■■■■■■■■	A controller fault is indicated. Make sure that all connections are secure.
9 Bar ■■■■■■■■■	The parking brakes have a bad connection. Check the parking brake and motor connections. Make sure the controller connections are secure.
10 Bar ■■■■■■■■■■	An excessive voltage has been applied to the controller. This is usually caused by a poor battery connection. Check the battery connections.



Electronic Diagram

